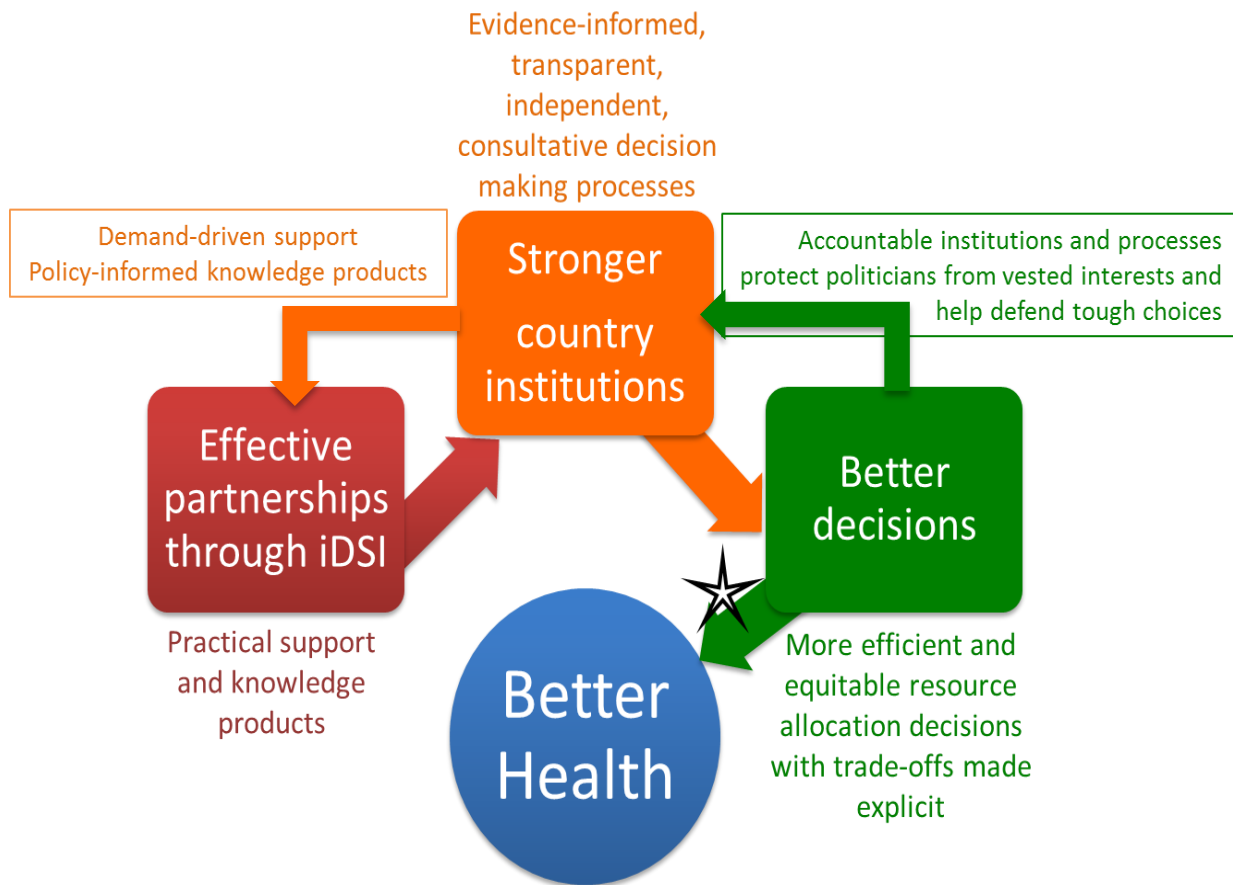


The iDSI Theory of Change



While there is a complex translation process between “better decisions” and “better health” dependent on many assumptions about local factors and systems (including linkage between decisions and budgets, delivery, implementation, and data accuracy), iDSI also seeks to be explicit about its ambitions, of what it could realistically achieve through helping countries strengthen their institutions for better decision-making.